

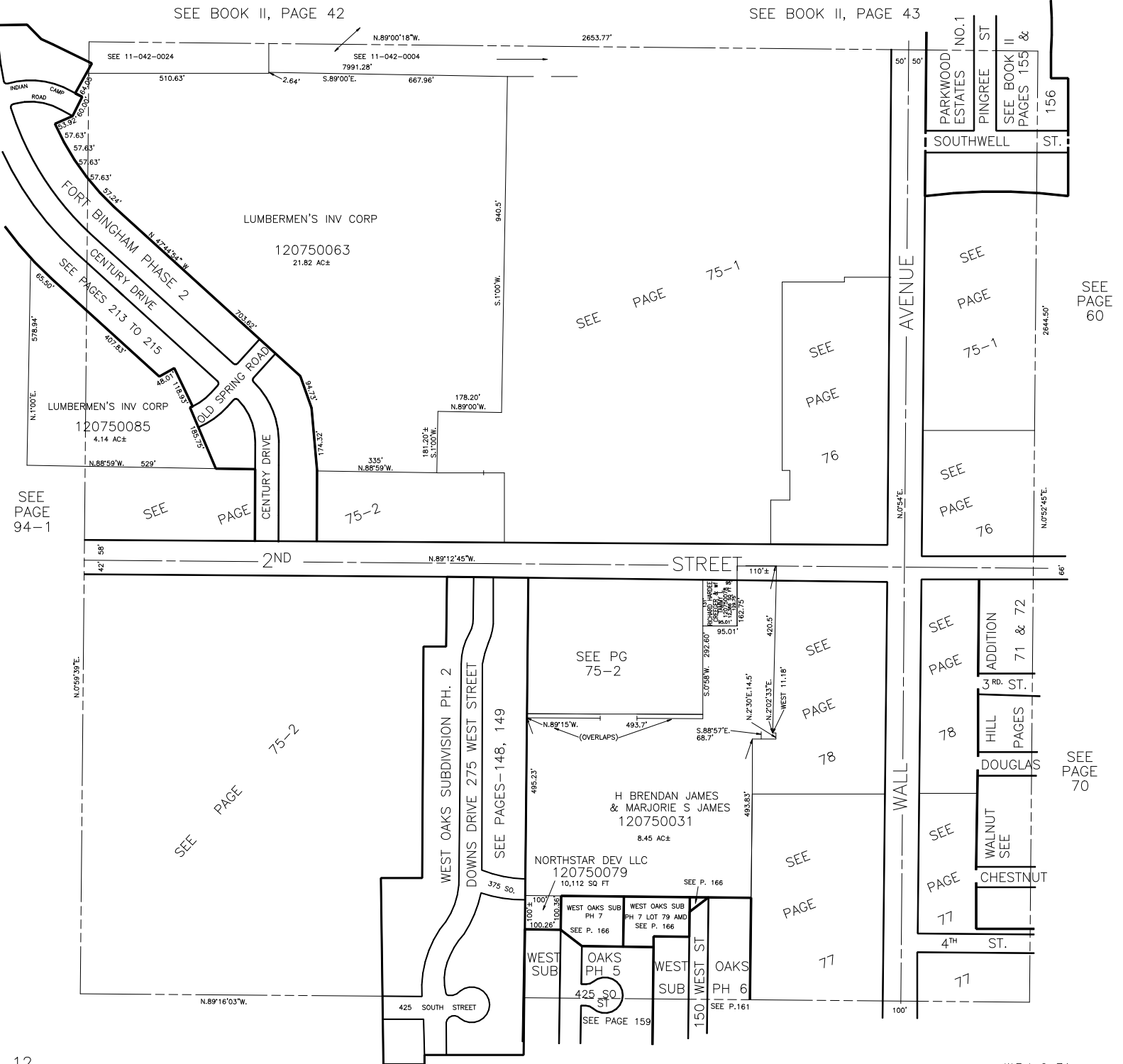
N.W. 1/4
SECTION 17, T.6N., R1W., S.L.B. & M.

TAXING UNIT: 25

IN OGDEN CITY
SCALE 1" = 200'

ALSO SEE PAGES 75-1, 2
SEE BOOK II, PAGE 43

SEE BOOK II, PAGE 42



SEE PAGE 94-1

SEE PAGE 91